

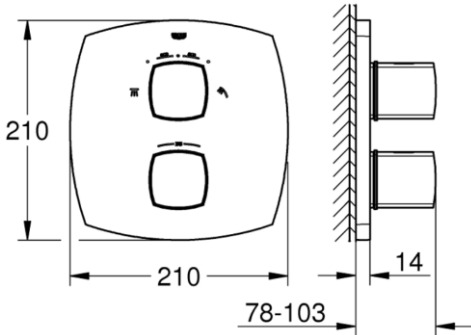
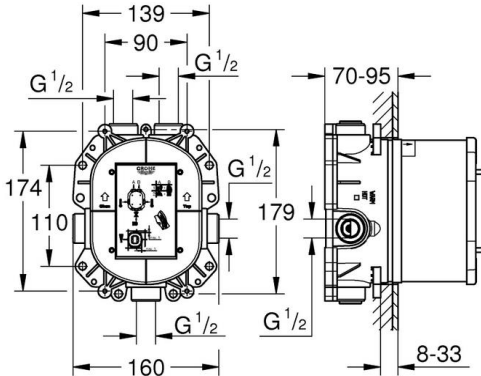




PROJECT		REF		REV	ITEM CODE	
LOCATION		DATE			PAGE	

SANITARY WARE SPECIFICATION SHEET

Item Descriptions	GROHE (Germany) "Grandera" Thermostatic shower mixer trim with integrated 2-way diverter and concealed body	Illustration/ Drawing	    <div><p>Colour options:</p><div><ul style="list-style-type: none">000 StarLight ChromeDC0 SuperSteelDA0 Warm SunsetA00 Hard GraphiteAL0 Brushed Hard Graphite</div><div><ul style="list-style-type: none">IG0 Chrome/GoldGL0 Cool SunriseGN0 Brushed Cool SunriseDL0 Brushed Warm SunsetBE0 Polished NickelEN0 Brushed Nickel</div></div>
Dimensions	L210 x W103 x H210 mm		
Model	19937IG0 (Thermostatic mixer) 35500000 (Mounting box)		
Finish	Chrome Plated & Gold		
Country of origin	Germany		
Manufacturer	GROHE Limited		
Supplier	Acme Sanitary Ware Co. Ltd Mr. Eric Wong/ Mr. Don Yuen (852) 2388-7171 / (852) 2710-8012 acme@acmesanitary.com.hk www.acmesanitary.com.hk		
Contact Tel/Fax			
E-mail			
Website			
"Grandera" <u>Thermostatic shower mixer with integrated 2-way diverter</u>	<ul style="list-style-type: none">set for final installation for 35 050 000without concealed bodyGROHE StarLight chrome finishGROHE SafeStop safety button at 38°C (calibration required)GROHE SafeStop Plus optional temperature limiter at 43°C includedGROHE AquaDimmer Eco with multiple function:<ul style="list-style-type: none">shut off and flow controldiverter: shower head/hand showerIntegrated Eco-Button with Eco-Stop for showerwall escutcheon with GROHE QuickFix (covered escutcheon- and shaft sealing, covered fixing)metal handles 	"GROHE Rapido T" <u>Thermostatic mixer for concealed installation</u>  <ul style="list-style-type: none">for use with Grohtherm Specialwithout finishing trim setflat installation depth 70 - 95 mmeasy to install, premounted and tested unitGROHE TurboStat compact cartridge with wax thermoelementtwo top outlets 1/2", lockablehigh flow rate up to 50 l/min. by use of three outletsbottom outlet 1/2" can be used only with separate stop valvesafe to install, stable built-in-box and protective capfixation options for solid walls and dry claddingmaterial for wall sealing includedAquadimmer-diverter for bath mixer or stop valve for shower mixer in finishing trim setbody of DR brassbuilt-in non return valves and dirt strainersGROHE EcoJoy technology for less water and perfect flowmin. recommended pressure 1.0 bar	

Note:  YouTube (35500000 Grohe Rapido T Universal) <https://www.youtube.com/watch?v=M5vICM45qkE>

** All information of the above is for the reference only. No prior notice is made if any changes.*



Acme Sanitary Ware Co Ltd

Acme Building, 22-28 Nanking Street, Kowloon, Hong Kong
Tel: 2388 7171 Fax: 2710 8012
E-mail: acme@acmesanitaryware.com.hk
Website: www.acmesanitaryware.com.hk



Pure Freude
an Wasser

PROJECT		REF		REV	ITEM CODE	
LOCATION		DATE			PAGE	

SANITARY WARE SPECIFICATION SHEET

GROHE GRANDERA

TOMORROW'S GRAND STYLE

The GROHE Grandera collection is both a homage to an age of grandeur long past and an affirmation of modern sensibility, combining the highest standards of quality and craftsmanship with a love of detail and comfort.

Stylistically, the Grandera collection can be combined with a wide range of bathroom furnishings, with the added flexibility of two colors – chrome and chrome / gold.



Easy to clean thanks to the GROHE StarLight chrome coating

Just wipe the tap down with a dry cloth – the ultra smooth surface finish is scratch resistant and ensures a lasting luminous sheen. You'll save plenty of time cleaning while your tap always looks shiny and new.



GROHE SafeStop (Plus) – double scalding protection at 38°C and (optional) 43°C

Great for homes with children, this safety feature is set at 38°C, preventing you from turning up the water temperature too high. If desired, higher temperatures can be selected by pushing the button. Optional for extra safety: the easy-to-fit GROHE SafeStop Plus limiter ensures that the temperature does not exceed 43°C.



GROHE QuickFix Plus quick and easy installation in a few simple steps

Save time on the installation of your tap with GROHE QuickFix Plus. Consisting of fewer parts, our new system makes the installation process quicker and easier than ever.



Constant water temperature thanks to reliable GROHE TurboStat technology

Our precise control technology ensures an instant water flow at the desired temperature and keeps it constant irrespective of any fluctuations in water pressure or supply.



GROHE EcoJoy with water-saving function for reduced consumption

GROHE EcoJoy reduces water consumption by up to 50% without compromising on performance. Whenever you turn on your tap, you will enjoy a full jet of water while saving money nonetheless.



Note:

* All information of the above is for the reference only. No prior notice is made if any changes.



Acme Sanitary Ware Co Ltd

Acme Building, 22-28 Nanking Street, Kowloon, Hong Kong

Tel: 2388 7171 Fax: 2710 8012

E-mail: acme@acmesanitary.com.hk

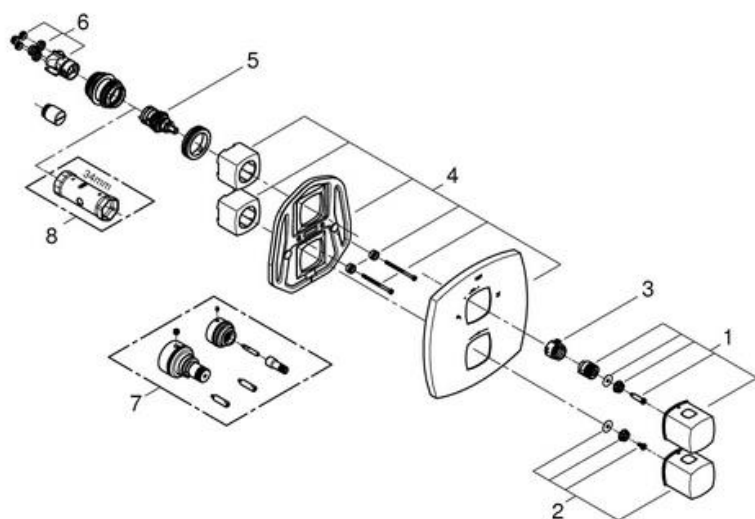
Website: www.acmesanitaryware.com.hk



Pure Freude
an Wasser

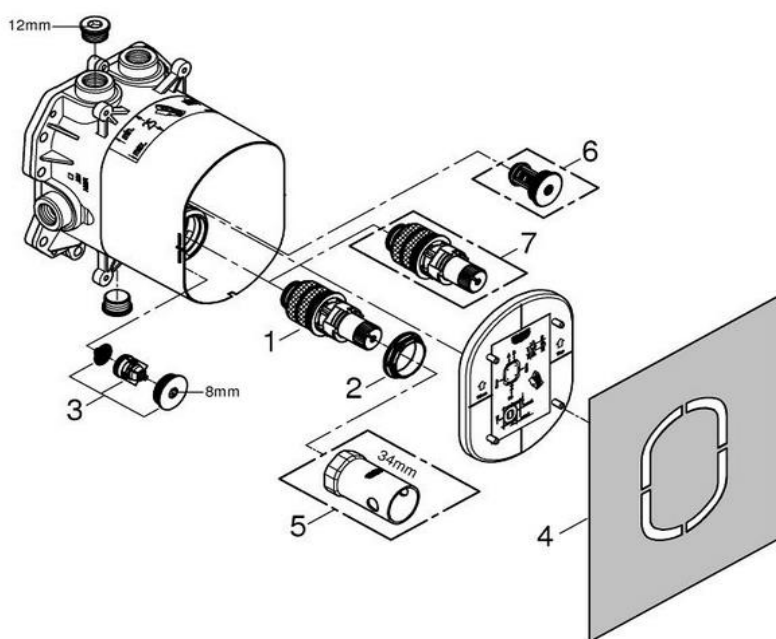
PROJECT		REF		REV	ITEM CODE	
LOCATION		DATE			PAGE	

SANITARY WARE SPECIFICATION SHEET



Pos.-nr.	Prod. description	Order-nr.
1	handle	47933IG0
2	Temperature control handle	47934IG0
3	Stop ring	47922000
4	Escutcheon	47937000
5	Aquadimmer	47364000
6	Extension-set 27.5 mm	47781000*
7	Socket spanner	19332000*

* Optional accessories



Pos.-nr.	Prod. Description	Order-nr.
1	Thermostatic compact cartridge 3/4"	47483000
2	Fitting ring	47765000
3	Non-return valve	47753000
4	Repl. kit f. seal	48263000
5	Socket spanner	19332000*
6	Safety combination (DIN EN 1717)	29007000*
7	Thermostatic compact cartridge 3/4"	47186000*

* Optional accessories

Note:

* All information of the above is for the reference only. No prior notice is made if any changes.